

15-0 Separating device



APPLICATION IMAGE



DESCRIPTION

The Series 15 separators are used together with the Series 18 pullers for removing ball bearings, roller bearings, inner rings and other flat parts in trade, industry and workshops when there is not enough space for pulling hooks. The separating and extracting process is able to gently separate these parts before they can be extracted from the outside.

RANGE OF APPLICATION

Together with the extractors of series 18 for extracting ball bearings, roller bearings, inner rings and other parts lying flat

BENEFIT

- The sharp cutting edges enable stripping where other stripping methods cannot be used
- The screw connection between the separating and extracting device ensures maximum stability during extraction
- If the separating jaws are screwed into the extractor the other way round, the contact surface is enlarged and extracted more gently

OPERATION

- Press the sharp cutting edges of the cutting device behind the part
- Clamp the separating jaws onto the side bolts of the separating device using the pressure spindle by tightening the adjusting nuts evenly and ensuring that the separating blades are positioned under the part to be removed as far as they will go
- Screw the pull bolt of the puller into the threaded holes of the separator as far as it will go
- Hold the separator firmly and pull off the relevant part safely and carefully by tightening the clamping nut

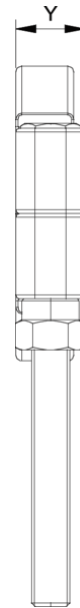
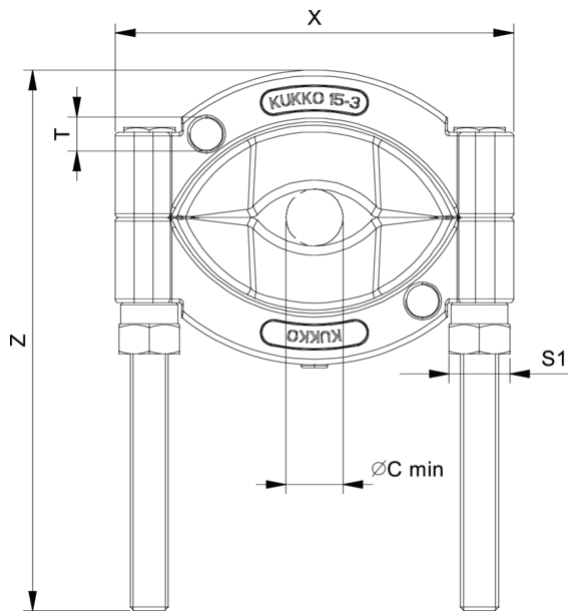
MASTER DATA

GTIN [EAN]	4021176006951
Country of origin	DE
Case material	Tool steel
Series	15
Net weight [kg]	0,695 kg
Package contents	1 piece
Packaging Act	PAP 21

SPARE PARTS

- 015122_Side bolt with nut

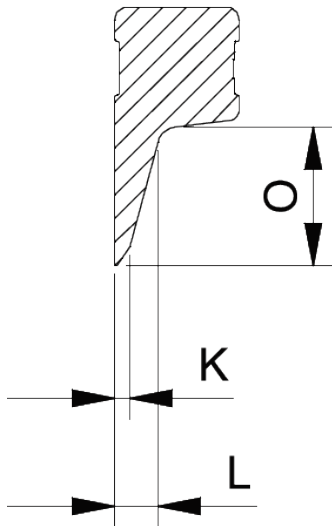
Separating device



Abbreviation	Attribut	Wert
X	Total width [mm]	100 mm
Y	Total depth [mm]	19,5 mm
Z	Total height [mm]	130,5 mm
S1	Width across flats [mm]	17 mm
Cmin	Cut-off diameter (min.) [mm]	8 mm
Cmax	Separating diameter (max.) [mm]	60 mm
K	Cutting edge thickness at the tip [mm]	0,3 mm
O	Usable snow depth [mm]	21 mm
H	Total cutting edge height [mm]	39,5 mm
L	Rear cutting edge thickness [mm]	5,5 mm
T1	Mounting thread for tension bolt [nominal dimension]	M10

Abbreviation	Attribut	Wert
X	Total width [mm]	100 mm
Y	Total depth [mm]	19,5 mm
Z	Total height [mm]	130,5 mm
S1	Width across flats [mm]	17 mm
Cmin	Cut-off diameter (min.) [mm]	8 mm
Cmax	Separating diameter (max.) [mm]	60 mm
K	Cutting edge thickness at the tip [mm]	0,3 mm
O	Usable snow depth [mm]	21 mm
H	Total cutting edge height [mm]	39,5 mm
L	Rear cutting edge thickness [mm]	5,5 mm
T1	Mounting thread for tension bolt [nominal dimension]	M10

A-A



Abbreviation	Attribut	Wert
X	Total width [mm]	100 mm
Y	Total depth [mm]	19,5 mm
Z	Total height [mm]	130,5 mm
S1	Width across flats [mm]	17 mm
Cmin	Cut-off diameter (min.) [mm]	8 mm
Cmax	Separating diameter (max.) [mm]	60 mm
K	Cutting edge thickness at the tip [mm]	0,3 mm
O	Usable snow depth [mm]	21 mm
H	Total cutting edge height [mm]	39,5 mm
L	Rear cutting edge thickness [mm]	5,5 mm
T1	Mounting thread for tension bolt [nominal dimension]	M10