

202-S 3-jaw puller with adjustable reach for fan wheels with oscillating and height-adjustable puller legs



DESCRIPTION

The 3-jaw puller with adjustable reach for fan wheels with oscillating and height-adjustable puller legs is used to pull fan wheels in all common sizes for trade, workshop and industry. Thanks to the particularly slim design, the puller legs grip through the two slots and grip the collar of the fan. The oscillating puller legs adapt to any installation situation and can be used universally thanks to the adjustable clamping depth. In addition, the puller legs can be rotated through 180° and can be used on both sides, meaning that different claw sizes are available depending on the space below the part to be pulled off. The 3-arm design guarantees even load distribution and therefore a particularly secure hold on the part to be pulled off.

RANGE OF APPLICATION

For pulling off fan wheels

BENEFIT

- Adjustable puller legs for customising the clamping depth thanks to multiple holes in the puller legs
- Oscillating pulling hooks offer a wide range of adjustment options
- Puller legs can be rotated through 180° and can be used on both sides
- Puller legs with different claw sizes for flexible working
- Secure positioning of the spindle thanks to the rotatable spindle tip, both on smooth surfaces and when centring (Switch Technology)
- 3-jaw design ensures even force distribution and enables greater pulling power
- Anti-slip guard on the spindle head for safe working with wrench
- Spindle riser protects the threading

OPERATION

- Position the puller leg on the part to be removed from the outside
- Swing the claws under the component
- Pull the spindle manually under pressure to fix it
- Use a ratchet or combination spanner to move the hexagon on the spindle head until the component is released

MASTER DATA

GTIN [EAN]	4021176027581
Country of origin	DE
Case material	Tool steel
Series	202-S
Net weight [kg]	1,74 kg
Package contents	1 piece
Packaging Act	PAP 21

SPARE PARTS

- 202-1-T_Traverse
- 202-S-S_3 Pulling hook (set)
- 614250_Mechanical pressure spindle
- 614240_Pressure spindle

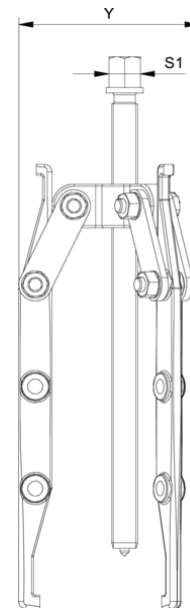
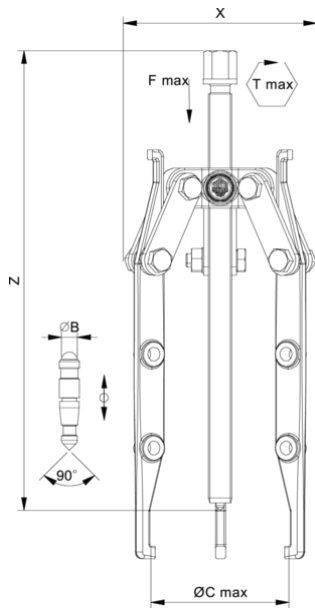
APPLICATION IMAGE



DETAIL IMAGE

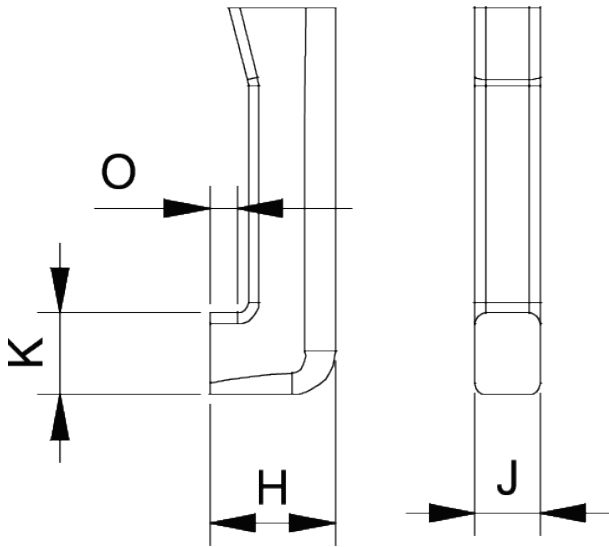


3-jaw puller with adjustable reach for fan wheels with oscillating and height-adjustable puller legs

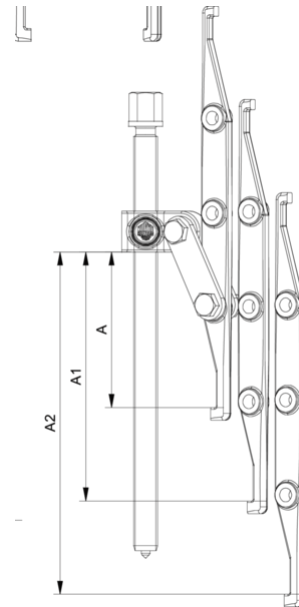


Abbreviation	Attribut	Wert
X	Total width [mm]	210 mm
Y	Total depth [mm]	210 mm
Z	Total height [mm]	275 mm
A	Clamping depth outside pull-off [mm]	200 mm
S1	Width across flats [mm]	17 mm
Cmin	Span outside pull-off (min.) [mm]	11 mm
Cmax	Span outside pull-off (max.) [mm]	200 mm
K	Hook root thickness at the tip (claw thickness K) [mm]	6 mm
J	Hook base width (claw width J) [mm]	6 mm
O	Hook base depth usable (claw depth usable O) [mm]	3,5 mm
H	Total hook root depth (total claw depth H) [mm]	8,5 mm
L	Total claw thickness (L+1mm) (claw distance to base surface) [mm]	6 mm
Emin	Span inside pull-out (min.) [mm]	40 mm
Tmax	Max. torque [Nm]	35 Nm
Fmax	Max. tractive force [t]	2 t
Fmax	Max. tensile force [kN]	20 kN

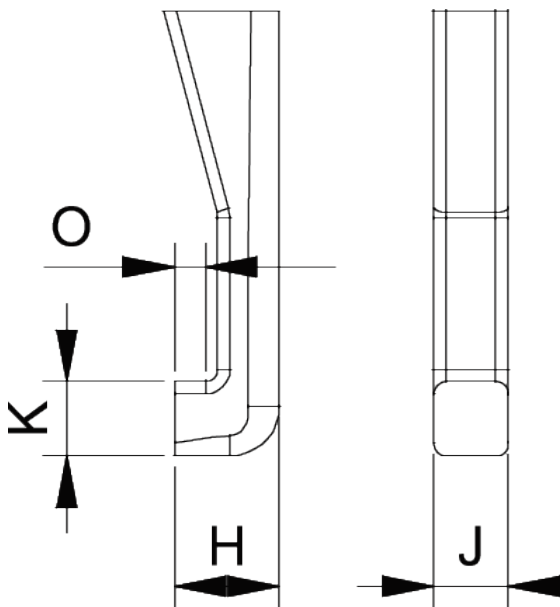
Abbreviation	Attribut	Wert
X	Total width [mm]	210 mm
Y	Total depth [mm]	210 mm
Z	Total height [mm]	275 mm
A	Clamping depth outside pull-off [mm]	200 mm
S1	Width across flats [mm]	17 mm
Cmin	Span outside pull-off (min.) [mm]	11 mm
Cmax	Span outside pull-off (max.) [mm]	200 mm
K	Hook root thickness at the tip (claw thickness K) [mm]	6 mm
J	Hook base width (claw width J) [mm]	6 mm
O	Hook base depth usable (claw depth usable O) [mm]	3,5 mm
H	Total hook root depth (total claw depth H) [mm]	8,5 mm
L	Total claw thickness (L+1mm) (claw distance to base surface) [mm]	6 mm
Emin	Span inside pull-out (min.) [mm]	40 mm
Tmax	Max. torque [Nm]	35 Nm
Fmax	Max. tractive force [t]	2 t
Fmax	Max. tensile force [kN]	20 kN



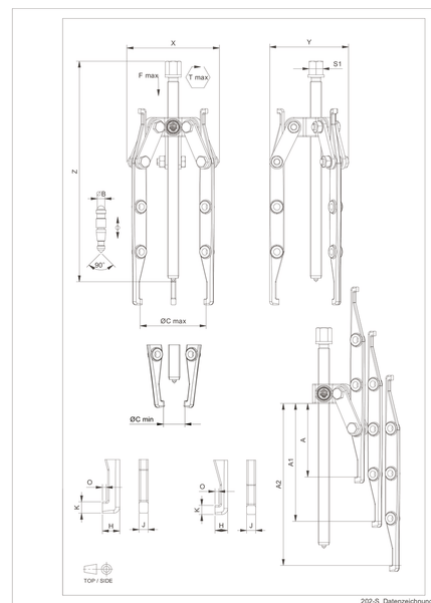
Abbreviation	Attribut	Wert
X	Total width [mm]	210 mm
Y	Total depth [mm]	210 mm
Z	Total height [mm]	275 mm
A	Clamping depth outside pull-off [mm]	200 mm
S1	Width across flats [mm]	17 mm
Cmin	Span outside pull-off (min.) [mm]	11 mm
Cmax	Span outside pull-off (max.) [mm]	200 mm
K	Hook root thickness at the tip (claw thickness K) [mm]	6 mm
J	Hook base width (claw width J) [mm]	6 mm
O	Hook base depth usable (claw depth usable O) [mm]	3,5 mm
H	Total hook root depth (total claw depth H) [mm]	8,5 mm
L	Total claw thickness (L+1mm) (claw distance to base surface) [mm]	6 mm
Emin	Span inside pull-out (min.) [mm]	40 mm
Tmax	Max. torque [Nm]	35 Nm
Fmax	Max. tractive force [t]	2 t
Fmax	Max. tensile force [kN]	20 kN



Abbreviation	Attribut	Wert
X	Total width [mm]	210 mm
Y	Total depth [mm]	210 mm
Z	Total height [mm]	275 mm
A	Clamping depth outside pull-off [mm]	200 mm
S1	Width across flats [mm]	17 mm
Cmin	Span outside pull-off (min.) [mm]	11 mm
Cmax	Span outside pull-off (max.) [mm]	200 mm
K	Hook root thickness at the tip (claw thickness K) [mm]	6 mm
J	Hook base width (claw width J) [mm]	6 mm
O	Hook base depth usable (claw depth usable O) [mm]	3,5 mm
H	Total hook root depth (total claw depth H) [mm]	8,5 mm
L	Total claw thickness (L+1mm) (claw distance to base surface) [mm]	6 mm
Emin	Span inside pull-out (min.) [mm]	40 mm
Tmax	Max. torque [Nm]	35 Nm
Fmax	Max. tractive force [t]	2 t
Fmax	Max. tensile force [kN]	20 kN



Abbreviation	Attribut	Wert
X	Total width [mm]	210 mm
Y	Total depth [mm]	210 mm
Z	Total height [mm]	275 mm
A	Clamping depth outside pull-off [mm]	200 mm
S1	Width across flats [mm]	17 mm
Cmin	Span outside pull-off (min.) [mm]	11 mm
Cmax	Span outside pull-off (max.) [mm]	200 mm



Abbreviation	Attribut	Wert
X	Total width [mm]	210 mm
Y	Total depth [mm]	210 mm
Z	Total height [mm]	275 mm
A	Clamping depth outside pull-off [mm]	200 mm
S1	Width across flats [mm]	17 mm
Cmin	Span outside pull-off (min.) [mm]	11 mm
Cmax	Span outside pull-off (max.) [mm]	200 mm

K	Hook root thickness at the tip (claw thickness K) [mm]	6 mm
J	Hook base width (claw width J) [mm]	6 mm
O	Hook base depth usable (claw depth usable O) [mm]	3,5 mm
H	Total hook root depth (total claw depth H) [mm]	8,5 mm
L	Total claw thickness (L+1mm) (claw distance to base surface) [mm]	6 mm
Emin	Span inside pull-out (min.) [mm]	40 mm
Tmax	Max. torque [Nm]	35 Nm
Fmax	Max. tractive force [t]	2 t
Fmax	Max. tensile force [kN]	20 kN

K	Hook root thickness at the tip (claw thickness K) [mm]	6 mm
J	Hook base width (claw width J) [mm]	6 mm
O	Hook base depth usable (claw depth usable O) [mm]	3,5 mm
H	Total hook root depth (total claw depth H) [mm]	8,5 mm
L	Total claw thickness (L+1mm) (claw distance to base surface) [mm]	6 mm
Emin	Span inside pull-out (min.) [mm]	40 mm
Tmax	Max. torque [Nm]	35 Nm
Fmax	Max. tractive force [t]	2 t
Fmax	Max. tensile force [kN]	20 kN