

22-2 Counter stay



APPLICATION IMAGE



DESCRIPTION

Counter stays from the 22 series are used together with internal extractors from the 21 series in trade, industry and workshops. Counter stays are particularly suitable for large cylinder liners and ball bearings etc. thanks to the ribbed shape of the support feet and ensure a firm stand when extracting. This improves the gentle extraction of internal parts.

RANGE OF APPLICATION

Together with internal extractors of the series 21

BENEFIT

- Sizes from 21-2 are particularly low-friction due to thrust bearings integrated in the mould
- The frictional resistance of the counter stay nut is minimised by a built-in thrust bearing

OPERATION

- Determine the internal diameter of the ball bearing and select a suitable internal extractor
- Insert the internal extractor into the bore and tighten the clamping nut
- Support the counter stay on the housing and screw it onto the wedge spindle of the internal extractor
- Hold the handle of the counter stay and pull out the bearing safely by tightening the hexagon nut
- Retighten the clamping nut when pulling out

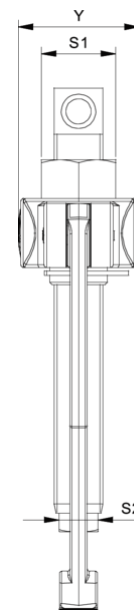
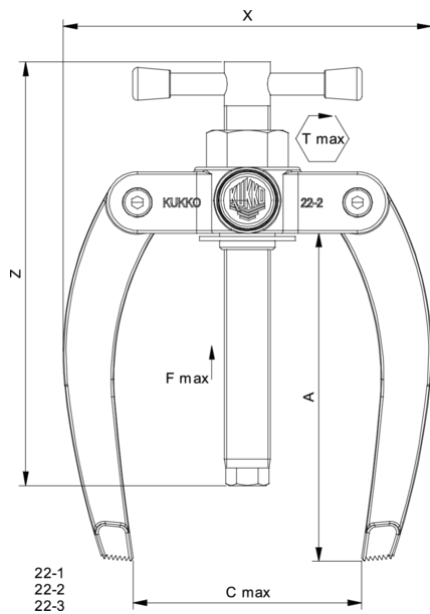
MASTER DATA

GTIN [EAN]	4021176012303
Country of origin	DE
Case material	Tool steel
Series	22
Net weight [kg]	1,873 kg
Package contents	1 piece
Packaging Act	PAP 21

SPARE PARTS

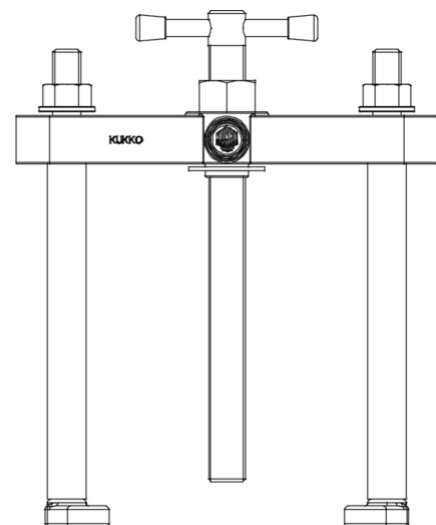
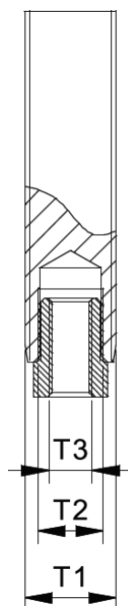
- 22-2-T_Traverse
- 022-206_Ersatzspindel
- 22-2-1-P_2 Pulling hooks (pair)

Counter stay



Abbreviation	Attribut	Wert
X	Total width [mm]	190 mm
Y	Total depth [mm]	52 mm
S1	Width across flats [mm]	32 mm
Fmax	Max. tractive force [t]	4 t
Fmax	Max. tensile force [kN]	40 kN
A	Clamping depth [mm]	165 mm
T1	External thread of the spindle [nominal dimension]	G 1/2
T2	Internal thread of the spindle [nominal dimension]	15-16 G, M10

Abbreviation	Attribut	Wert
X	Total width [mm]	190 mm
Y	Total depth [mm]	52 mm
S1	Width across flats [mm]	32 mm
Fmax	Max. tractive force [t]	4 t
Fmax	Max. tensile force [kN]	40 kN
A	Clamping depth [mm]	165 mm
T1	External thread of the spindle [nominal dimension]	G 1/2
T2	Internal thread of the spindle [nominal dimension]	15-16 G, M10



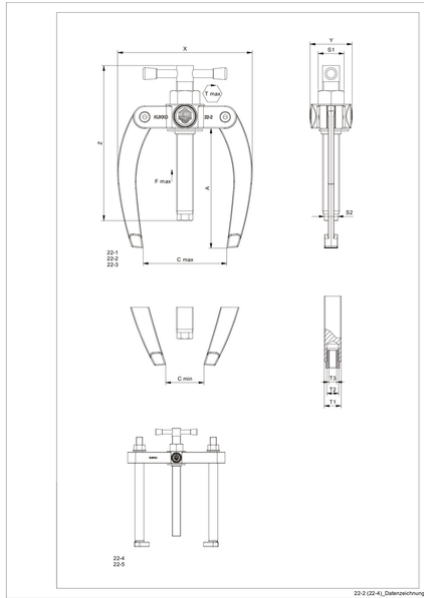
22-4
22-5

Abbreviation	Attribut	Wert
--------------	----------	------

Abbreviation	Attribut	Wert
--------------	----------	------

X	Total width [mm]	190 mm
Y	Total depth [mm]	52 mm
S1	Width across flats [mm]	32 mm
Fmax	Max. tractive force [t]	4 t
Fmax	Max. tensile force [kN]	40 kN
A	Clamping depth [mm]	165 mm
T1	External thread of the spindle [nominal dimension]	G 1/2
T2	Internal thread of the spindle [nominal dimension]	15-16 G, M10

X	Total width [mm]	190 mm
Y	Total depth [mm]	52 mm
S1	Width across flats [mm]	32 mm
Fmax	Max. tractive force [t]	4 t
Fmax	Max. tensile force [kN]	40 kN
A	Clamping depth [mm]	165 mm
T1	External thread of the spindle [nominal dimension]	G 1/2
T2	Internal thread of the spindle [nominal dimension]	15-16 G, M10



Abbreviation	Attribut	Wert
X	Total width [mm]	190 mm
Y	Total depth [mm]	52 mm
S1	Width across flats [mm]	32 mm
Fmax	Max. tractive force [t]	4 t
Fmax	Max. tensile force [kN]	40 kN
A	Clamping depth [mm]	165 mm
T1	External thread of the spindle [nominal dimension]	G 1/2
T2	Internal thread of the spindle [nominal dimension]	15-16 G, M10